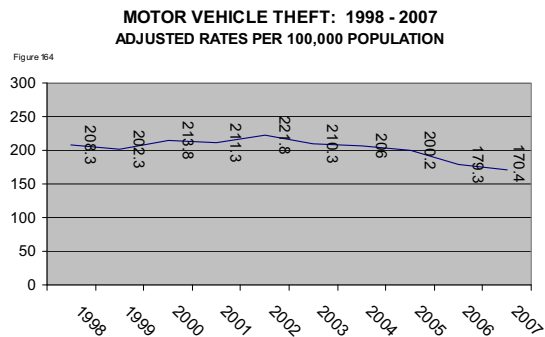
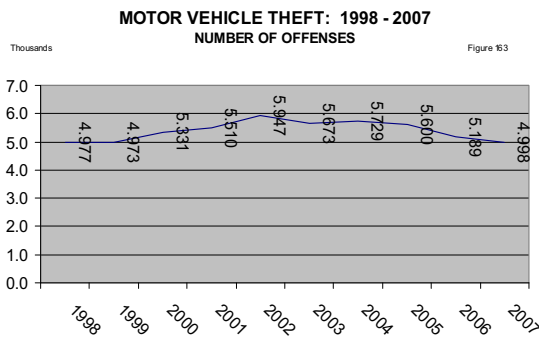


MOTOR VEHICLE THEFT

“The theft of a motor vehicle.”

A “motor vehicle” is a self-propelled vehicle that runs on the surface of land and not on rails, and which fits one of the following: Automobiles, Buses, Recreational Vehicles, Trucks, Other (motorcycles, motor scooters, trail bikes, mopeds, snowmobiles, golf carts, etc.)

2007 MOTOR VEHICLE THEFT	
Number of Offenses	4,998
Adjusted Rate	170.4
Percent Decrease	-5.0%
Number of Incidents	4900
Number of Arrests	664
Dollar Value Stolen	\$29,032,711
Dollar Value Recovered	\$19,827,402
Percent Recovered	68.0%



Motor vehicle thefts decreased 5% from 2006 to 2007, recording the lowest number of offenses (4,998) and adjusted rate (170.4) for the decade. Motor vehicle thefts peaked in 2002 with 5,947 offenses or 221.8 per 100,000 population.

2007 MOTOR VEHICLES STOLEN	
Table 62	
TYPE	NUMBER
Auto	4,034
Buses	7
Motorcycles & Others	612
Recreational Vehicles	142
Trucks	377
TOTAL	5,172

- The average cost per stolen motor vehicle was \$5,613.
- Automobiles accounted for 78% of the stolen motor vehicles.
- More than 99% of the incidents were completed – less than 1% was attempted.
- Stolen motor vehicles (68%) had the highest recovery rate of any stolen property item.

MOTOR VEHICLE THEFT INCIDENTS ATTEMPTED AND COMPLETED										
Table 63										
IOWA, 2003 - 2007										
	2003		2004		2005		2006		2007	
	#	%	#	%	#	%	#	%	#	%
ATTEMPTED	31	0.6	30	0.5	31	0.6	23	0.5	34	0.7
COMPLETED	5,427	99.4	5,520	99.5	5,455	99.4	5,029	99.5	4,866	99.3
TOTAL	5,458		5,550		5,486		5,052		4,900	

OFFENDERS

**MOTOR VEHICLE THEFT ARRESTS BY GENDER
IOWA, 2007**

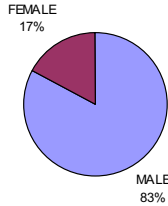


Figure 165

**MOTOR VEHICLE THEFT ARRESTS BY RACE
IOWA, 2007**

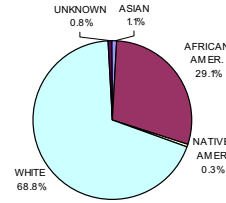


Figure 166

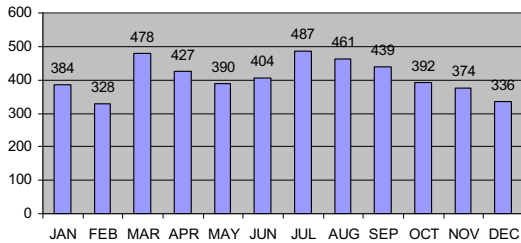
Males accounted for 83% (550 offenders) of the recorded arrests in 2007 while females recorded 17% (114 offenders). White juveniles were the most arrested group of persons, accounting for 36% of the total arrests followed by White adults (33%) and African American juveniles (21%). Juveniles accounted for 58% of the total arrests.

Table 64 2007 MOTOR VEHICLE THEFT ARRESTS BY RACE AND AGE GROUP						
	ASIAN	AFRICAN AMER.	NATIVE AMER.	WHITE	UNK	TOTAL
JUVENILE	5	136		239	1	381
ADULT	2	57	2	218	4	283
TOTAL	7	193	2	457	5	664

WHEN

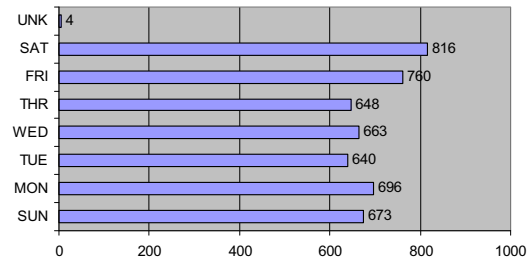
**MOTOR VEHICLE THEFT BY MONTH
IOWA, 2007**

Figure 167



**MOTOR VEHICLE THEFT BY DAY
IOWA, 2007**

Figure 168

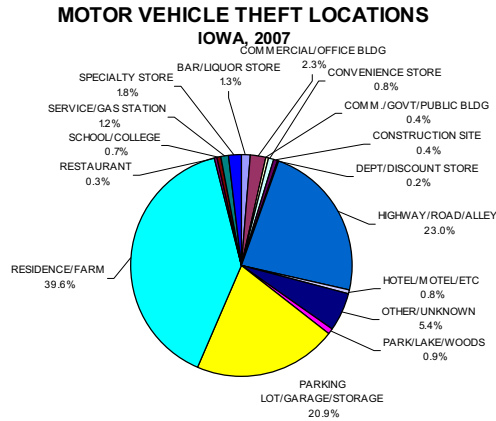


MOTOR VEHICLE THEFT BY HOUR Table 65 IOWA, 2007			
Midnight	515	Noon	186
1:00	177	1:00	165
2:00	140	2:00	164
3:00	95	3:00	166
4:00	90	4:00	194
5:00	78	5:00	219
6:00	102	6:00	223
7:00	178	7:00	193
8:00	208	8:00	206
9:00	165	9:00	240
10:00	184	10:00	276
11:00	163	11:00	252

In 2007, the most frequent month of a theft was July, accounting for 10% of the incidents. February was the least reported month for the theft of a motor vehicle. Saturday was the most frequent day of occurrence accounting for 17% of the incidents. The midnight hour was the most reported time, with more than double the number of incidents than any other time. The least reported times were between 3:00 am and 7:00 am. The victim did not know the time of theft in 321 incidents.

WHERE

Figure 89



Residence or farm was the location most reported for the occurrence of a motor vehicle theft in 2007, accounting for 39.6%. Highway/Road (23.0%) and Parking Lot/Garage/Storage (20.9%) were the next most reported categories.

2007 MOTOR VEHICLE THEFT BY COUNTY

