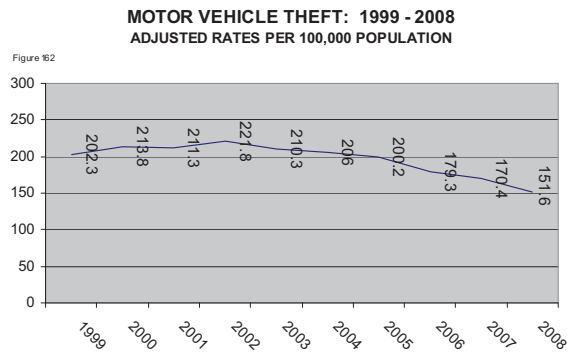
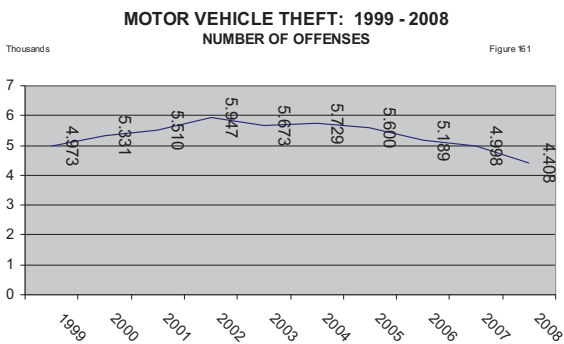


# MOTOR VEHICLE THEFT

“The theft of a motor vehicle.”

A “motor vehicle” is a self-propelled vehicle that runs on the surface of land and not on rails, and which fits one of the following: Automobiles, Buses, Recreational Vehicles, Trucks, Other (motorcycles, motor scooters, trail bikes, mopeds, snowmobiles, golf carts, etc.)

2008 MOTOR VEHICLE THEFT	
Number of Offenses	4,408
Adjusted Rate	151.6
Percent Decrease	-11.0%
Number of Incidents	4,314
Number of Arrests	582
Dollar Value Stolen	\$24,726,680
Dollar Value Recovered	\$17,028,340
Percent Recovered	69.0%



Motor vehicle thefts decreased 11% from 2007 to 2008, recording the lowest number of offenses (4,408) and adjusted rate (151.6) for the decade. Motor vehicle thefts peaked in 2002 with 5,947 offenses or 221.8 adjusted rate.

2008 MOTOR VEHICLES STOLEN	
Table 64	
TYPE	NUMBER
Auto	3,578
Buses	1
Motorcycles & Others	470
Recreational Vehicles	138
Trucks	310
<b>TOTAL</b>	<b>4,497</b>

- The average cost per stolen motor vehicle was \$5,499, which is a slight decrease from 2007.
- Automobiles accounted for 79.6% of the stolen motor vehicles.
- More than 99% of the incidents were completed – less than 1% was attempted.
- Stolen motor vehicles (69%) had the highest recovery rate of any stolen property item.

MOTOR VEHICLE THEFT INCIDENTS ATTEMPTED AND COMPLETED										
Table 65										
IOWA, 2004 - 2008										
	2004		2005		2006		2007		2008	
	#	%	#	%	#	%	#	%	#	%
ATTEMPTED	30	0.5	31	0.6	23	0.5	34	0.7	36	0.8
COMPLETED	5,520	99.5	5,455	99.4	5,029	99.5	4,866	99.3	4,278	99.2
<b>TOTAL</b>	<b>5,550</b>		<b>5,486</b>		<b>5,052</b>		<b>4,900</b>		<b>4,314</b>	

# OFFENDERS

**MOTOR VEHICLE THEFT ARRESTS BY GENDER**  
IOWA, 2008

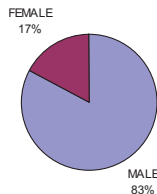


Figure 63

**MOTOR VEHICLE THEFT ARRESTS BY RACE**  
IOWA, 2008

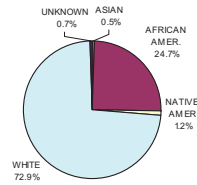


Figure 64

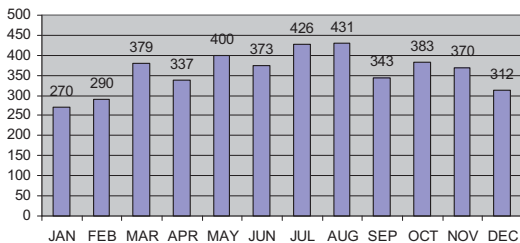
Males accounted for 83% (481 offenders) of the recorded arrests in 2008 while females recorded 17% (101 offenders). White male adults were the most arrested group of persons, accounting for 38.3% of the total arrests followed by White male juveniles (19.9%). Juveniles accounted for 40.5% of the total arrests.

	FEMALE			MALE					TOTAL
	AFRICAN AMER.	NATIVE AMER.	WHITE	ASIAN	AFRICAN AMER.	NATIVE AMER.	UNK	WHITE	
JUVENILE	18		32	2	61	4	3	116	236
ADULT	7	1	43	1	58	2	1	233	346
TOTAL	25	1	75	3	119	6	4	349	582

# WHEN

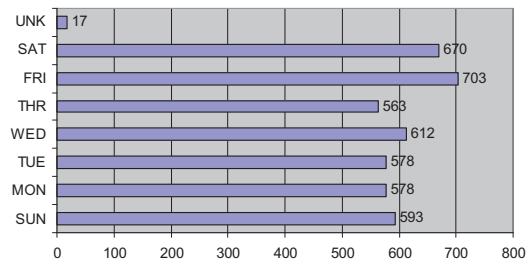
**MOTOR VEHICLE THEFT BY MONTH**  
IOWA, 2008

Figure 65



**MOTOR VEHICLE THEFT BY DAY**  
IOWA, 2008

Figure 66



Midnight	559	Noon	173
1:00	137	1:00	106
2:00	124	2:00	136
3:00	87	3:00	154
4:00	80	4:00	162
5:00	73	5:00	209
6:00	127	6:00	192
7:00	129	7:00	169
8:00	138	8:00	186
9:00	140	9:00	197
10:00	147	10:00	272
11:00	142	11:00	197

In 2008, the most frequent month for a theft was August, accounting for 10% of the incidents. January was the least reported month accounting for 6.2%. Friday was the most frequent day of occurrence accounting for 16.3% of the incidents. The midnight hour was the most reported time, with more than double the number of incidents than any other time. The least reported times were between 3:00 am and 6:00 am. The victim did not know the time of theft in 278 incidents.

